

# FREQUENCY MIXERS

Plug-In & Flatpack

## LEVEL 7 500 Hz to 4.3 GHz



ASK-X65



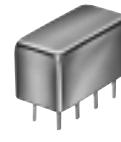
ASK-W38



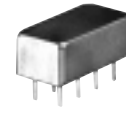
ROSE



SAM



SRA



SBL  
SIMA

+7 dBm LO, up to +1 dBm RF

MODEL NO.	FREQUENCY MHz		CONVERSION LOSS dB				LO-RF ISOLATION, dB					LO-IF ISOLATION, dB					CASE STYLE	CONNECTION	PRICE \$		
	LO/RF f <sub>L</sub> -f <sub>0</sub>	IF	Mid-Band			Total Range Max.	L	M	U	L	M	U	L	M	U	Note B	Qty. (1-9)				
			$\bar{x}$	$\sigma$	Max.																
o ASK-1'	1-600	DC-600	5.58	.06	7.0	8.5	50	30	35	25	30	20	45	35	30	20	25	15	W38	w	6.95
=o ASK-2'	1-1000	DC-1000	6.79	.10	8.0	9.8	60	40	35	18	26	16	50	30	25	17	15	10	W38	w	8.25
ROSE-1	1-600	DC-600	5.08	.03	6.5	7.5	40	30	35	25	30	20	55	40	40	20	25	18	PP94	ab	11.95
ROSE-2	1-1000	DC-1000	5.60	.23	7.0	8.0	61	45	37	22	25	18	55	40	26	17	16	12	PP94	ab	16.95
SAM-1	1-600	DC-600	5.67	.05	7.0	8.5	55	45	45	30	35	20	50	40	40	25	30	20	A03	e	16.95
SAM-2	1-1000	DC-1000	5.68	.08	7.5	9.5	55	45	40	25	35	20	50	40	40	25	30	25	A03	f	20.45
SAM-3	0.1-500	DC-500	5.04	.07	7.0	8.5	60	50	50	35	35	30	50	40	45	30	30	20	A03	e	19.95
SRA-1	.5-500	DC-500	5.11	.09	7.0	8.5	50	45	45	30	35	25	45	35	40	25	30	20	A01	e	13.45
SRA-1W	1-750	DC-750	5.80	.04	7.5	8.5	50	45	45	30	35	25	45	30	40	25	30	20	A01	f	15.95
SRA-1-1	.1-500	DC-500	4.81	.11	7.5	8.5	50	45	45	30	35	25	45	30	40	25	30	20	A01	e	14.95
SRA-2	1-1000	.5-500	5.66	.07	7.5	8.5	45	30	35	20	30	20	45	30	30	20	30	20	A01	j	15.95
SRA-2CM	5-1000	DC-1000	5.27	.04	7.0	8.5	60	50	35	30	30	25	50	45	30	25	25	20	A01	f	14.95
SRA-3	.025-200	DC-200	4.61	.06	7.5	8.5	60	50	45	35	35	25	45	35	40	30	30	20	A01	e	15.95
SRA-5	5-1500	10-600	6.69	.07	8.0	8.5	50	45	35	30	30	20	45	40	30	25	25	15	A06	m	24.95
SRA-6	.003-100	DC-100	4.58	.05	7.5	8.5	60	50	45	30	35	25	60	45	40	25	30	20	A01	d	24.95
SRA-8	.0005-10	DC-10	5.69	.11	7.5	8.5	60	50	50	40	45	35	60	50	50	40	45	35	A01	d	29.95
SRA-11	5-2000	10-600	6.72	.07	8.5	9.0	50	45	35	25	30	20	45	40	30	20	25	15	A06	m	20.95
SRA-12	800-1250	50-90	6.21	.13	7.5	7.5	32	25	35	25	35	25	30	20	30	20	30	20	A06	m	29.95
SRA-149***	5-500	DC-500	5.61	.07	6.5	8.0	60	50	55	45	53	40	50	40	35	25	30	24	A06	p	9.95
SRA-2000	100-2000	DC-600	8.60	.15	9.5	9.5	37 (Typ.) 20 (Min.)					30 (Typ.) 20 (Min.)					A06	m	21.95		
SRA-2400	750-2400	DC-400	5.95	.26	9.0	9.0	30	20	30	20	30	20	30	8	30	8	30	8	A06	s	22.95
SRA-3500**	500-3500	DC-1000	7.28	.31	9.5	9.5	30	17	30	17	30	17	20	8	20	8	20	8	A06	s	28.95
□ SBL-1	1-500	DC-500	5.60	.09	7.0	8.0	60	45	45	35	40	25	45	35	40	25	30	20	A06	d	4.75
□ SBL-1X	10-1000	5-500	5.88	.10	7.5	8.0	50	40	40	30	30	20	50	45	40	35	35	25	A06	j	6.45
□ SBL-1Z	10-1000	DC-500	6.27	.09	7.5	9.0	50	40	35	25	25	20	40	25	25	18	19	15	A06	s	7.45
□ SBL-1-1	0.1-400	DC-400	4.84	.04	7.0	8.0	50	45	45	30	35	25	45	30	40	25	30	20	A06	d	7.45
□ SBL-3	.025-200	DC-200	4.81	.05	7.5	8.5	55	50	45	30	35	25	45	35	40	30	30	20	A06	e	7.45
□ SBL-11	5-2000	10-600	7.08	.11	8.5	9.0	50	45	35	25	30	20	45	40	30	20	25	15	A06	m	19.95
SIMA-5	2-1500	DC-1000	7.01	.08	8.0	9.0	65	44	44	23	31	22	54	38	30	18	25	11	A06	m	24.95

L = low range [ $f_L$  to  $10 f_L$ ]

M = mid range [ $10 f_L$  to  $f_U/2$ ]  
m = mid band [ $2 f_L$  to  $f_U/2$ ]

U = upper range [ $f_U/2$  to  $f_U$ ]

### NOTES:

- $\bar{x}$  Average of conversion loss at center of mid-band frequency ( $f_L + f_U/4$ )
- $\sigma$  Standard deviation
- Non-hermetic
- † Phase detection, positive polarity
- ASK plug-in mounting case X65
- \*\* Below 10°C,  $f_L$  is 0.2 MHz.
- \* Conversion loss 9.5 dB maximum from 0.01 to 0.015 MHz
- \*\* Conversion loss 10dB maximum at IF=1000 MHz
- \*\*\* Blue bead pin 4
- A. General Quality Control Procedures, Environmental Specifications, Hi-Rel and MIL description are given in section 0, see "Mini-Circuits Guarantees Quality" article.
- B. Connector types and case mounted options, case finishes are given in section 0, see "Case Styles & Outline Drawings".
- C. Prices and Specifications subject to change without notice.
- 1. Absolute maximum power, voltage and current ratings:
  - 1a. RF power, 50 mW
  - 1b. Peak IF current, 40 mA

### NSN GUIDE

#### MCL NO. NSN MIL-M-28837/1\*

ASK-1	5895-01-320-0366
SAM-1	5895-01-117-2926
SAM-2	5895-01-165-6621
SAM-3	5895-01-062-9973
SBL-1	5895-01-126-4913
SBL-1X	5895-01-179-8084
SRA-1	5895-00-008-8272 03
SRA-1-1	5962-01-113-5431
SRA-1W	5895-01-163-0433 09
SRA-3	5895-01-021-5914
SRA-6	5895-01-124-0117
SRA-8	5985-01-081-0977
SRA-11	5895-01-273-0883
SBL-3	5895-01-326-6030
TAK-5	5895-01-271-0842
TAK-6	5895-01-231-2372
TFM-2	5895-01-135-1852
TFM-3	5895-01-112-0031
TFM-4	5895-01-317-9388
TFM-11	5895-01-409-1158
TFM-12	5895-01-179-5686
TSM-3	5895-01-373-2444

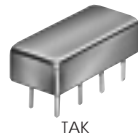


Distribution Centers NORTH AMERICA 800-654-7949 • 417 335-5935 • Fax 417-335-5945 • EUROPE 44-1252-832600 • Fax 44-1252-837010

INTERNET <http://www.minicircuits.com>

ISO 9001 CERTIFIED

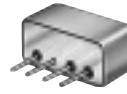
000807



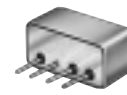
TAK



TSM



TFM



TUF

+7 dBm LO, up to +1 dBm RF

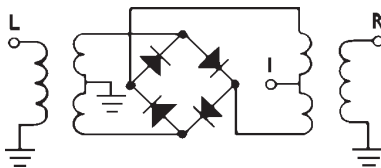
MODEL NO.	FREQUENCY MHz		CONVERSION LOSS dB				LO-RF ISOLATION, dB						LO-IF ISOLATION, dB						CASE STYLE	CONNECTION	PRICE \$
	LO/RF f <sub>L</sub> -f <sub>U</sub>	IF	Mid-Band			Total Range Max.	L Typ.	M Min.	U Typ.	M Min.	U Typ.	L Typ.	M Min.	U Typ.	M Min.	U Typ.	Qty. (1-9)				
			σ	Max.	σ																
																		σ			
TAK-5*	.01-250	DC-250	4.65	.02	7.0	8.5	60	50	50	35	40	35	55	45	45	30	35	25	A04	e	20.95
TAK-6	.5-600	DC-600	5.58	.04	7.5	8.5	60	50	50	30	40	25	55	45	45	30	30	20	A04	e	20.95
TSM-3	.1-500	DC-500	4.75	.04	7.5	8.5	60	50	50	35	35	25	55	45	45	30	35	25	A11	e	21.95
TFM-2	1-1000	DC-1000	5.74	.07	7.5	8.5	50	45	40	25	30	25	45	40	35	25	25	18	B02	z	13.95
TFM-3**	0.04-400	DC-400	4.70	.06	7.0	8.0	60	50	50	35	35	25	55	40	45	30	35	25	B02	z	21.45
TFM-4	5-1250	DC-1250	6.47	.05	7.5	8.5	50	45	40	30	30	25	45	40	35	25	25	20	B02	z	23.45
TFM-5	5-1500	DC-1000	6.33	.06	8.5	9.5	60	45	35	25	30	25	60	40	35	15	25	14	B02	aa	25.45
TFM-11	1-2000	5-600	7.16	.07	8.5	9.0	50	45	35	25	25	20	45	40	27	20	25	20	B13	z	47.45
TFM-12	800-1250	50-90	5.71	.14	—	7.5	35	25	35	25	35	25	30	20	30	20	30	20	B13	z	47.45
TFM-2400	750-2400	DC-400	6.65	.20	—	9.0	30	20	30	20	30	20	30	10	30	10	30	10	B13	aa	28.95
TFM-4300	300-4300	DC-800	5.87	.13	—	10.5	30	20	—	—	30	17	15	7	—	—	10	7	B13	aa	38.95
TUF-1	2-600	DC-600	5.85	.04	7.0	8.0	60	50	42	30	37	25	60	45	47	30	36	22	B02	z	4.25
TUF-2	50-1000	DC-1000	5.85	.07	7.5	9.0	58	40	47	30	42	25	50	35	44	20	29	18	B02	z	5.20
TUF-3	0.15-400	DC-400	4.7	.02	7.0	8.0	60	50	46	30	35	25	60	40	47	25	35	20	B02	z	6.10
TUF-5	20-1500	DC-1000	5.7	.04	9.0	9.0	54	40	42	30	39	25	40	25	32	18	23	8	B02	z	9.45
TUF-11A	1400-1900	40-500	6.8	.30	8.6	8.6	33 (typ.)	20 (min.)	—	—	—	—	29 (typ.)	15 (min.)	—	—	—	—	B02	z	16.95
TUF-860	800-1050	DC-250	5.6	.24	7.75	7.75	35 (typ.)	25 (min.)	—	—	—	—	27 (typ.)	20 (min.)	—	—	—	—	B02	z	9.45

L = low range [ $f_L$  to  $10 f_L$ ]

M = mid range [ $10 f_L$  to  $f_U/2$ ]

U = upper range [ $f_U/2$  to  $f_U$ ]

m = mid band [ $2f_L$  to  $f_U/2$ ]



pin connections see case style outline drawings

PORT	d	e	f	j	m	p	s	w	z	aa	ab
LO	8	8	8	8	8	8	1	1	4	1	1
RF	1	1	1	3,4^	1	2	8	4	1	4	3
IF	3,4^	3,4^	3,4^	1	3	5,6^	3	5	2	2	2
GND EXT.	2,5,6,7	2,5,6,7	2,5,6,7	2,5,6,7	2,5,6,7	1,3,4,7	2,5,6,7	2,3,6	3	3	4
CASE GND	—	2	2,5,6,7	2,5,6,7	2,5,6,7	3,4,7	2,5,6,7	—	3	3	4
NOT USED	—	—	—	—	4	—	4	—	—	—	—

^ pins must be connected together externally